

# Power Splitters

## PS Series

### Features

- Resistive type power splitter. Wide frequency range : DC to 20GHz.
- Wide band provides less distortion of square pulses of digital signals
- Small and easy to mount
- Special design and thin film produce less reflection.

### Applications

- Communication devices
- Wide band measuring instrumentation



### Part numbering system

Series code **PS 1608 G T2 - R50 - T1**

Size : PS1608,PS2012  
PS3216,PS5025

G : General

Packing quantity:  
T=Tape(T1) B=Bulk

Impedance : 50Ω

Number of Output terminals

Series code **PS 1005 T2 - R50 - FD - T1**

Size : PS1005

Number of Output terminals

Packing quantity:  
T=Tape (T1/T5), B=Bulk

No GND, Need Face down mounting

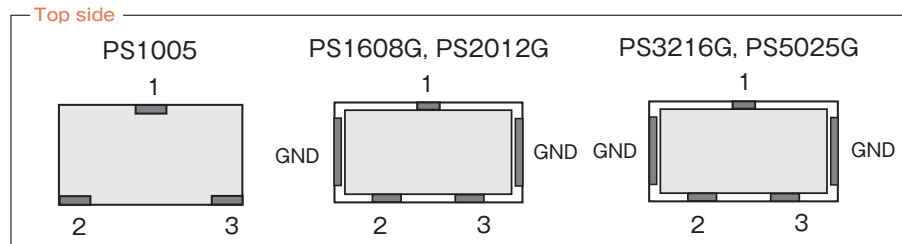
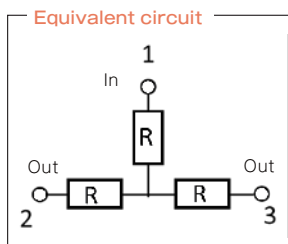
Impedance : 50Ω

### Electrical Specification

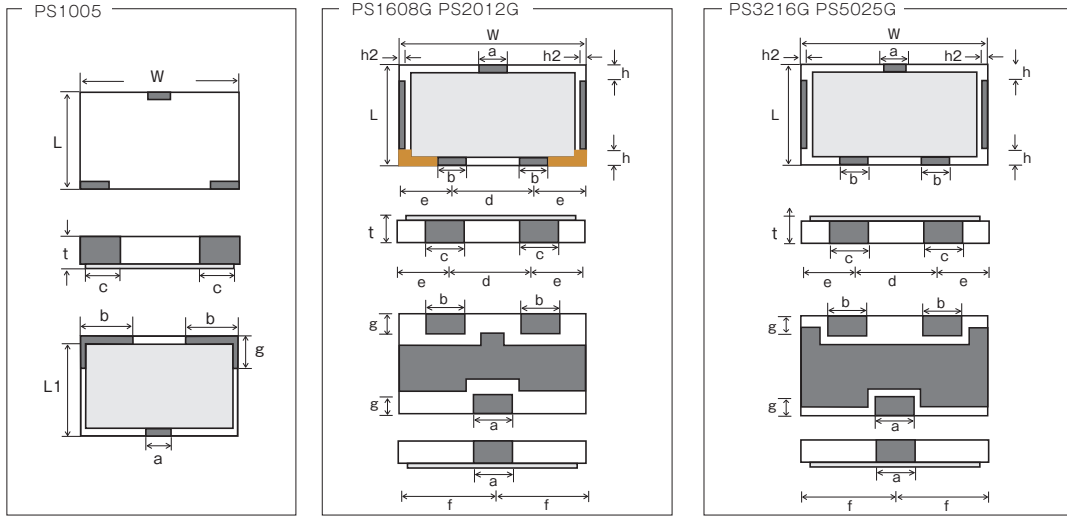
Type	PS1005 *1	PS1608G	PS2012G	PS3216G	PS5025G
Operating frequency	DC - 20GHz	DC - 20GHz	DC - 17.5GHz	DC - 15GHz	DC - 10GHz
Rated power	100mW	100mW	125mW	250mW	500mW
Insertion Loss	6dB±0.5dB	< 10GHz			< 7.5GHz
	6dB±1.0dB	< 20GHz	<17.5GHz	<15GHz	<10GHz
Distribution Deviation	< 0.3dB (Max frequency)				
VSWR	≤1.3	< 10GHz			< 7.5GHz
	≤1.5	< 20GHz	<17.5GHz	<15GHz	<10GHz
Operating temperature	-40°C ~ +125°C				
Packaging quantity	50pcs/bag(B)	50pcs/bag(B)	1,000pcs/reel(T1)		
	1,000pcs/reel(T1)	1,000pcs/reel(T1)			
	5,000pcs/reel(T5)				

\*1 The PS1005 series has no ground plane.

### Equivalent Circuit and pin arrangement



### ◆ Dimensions

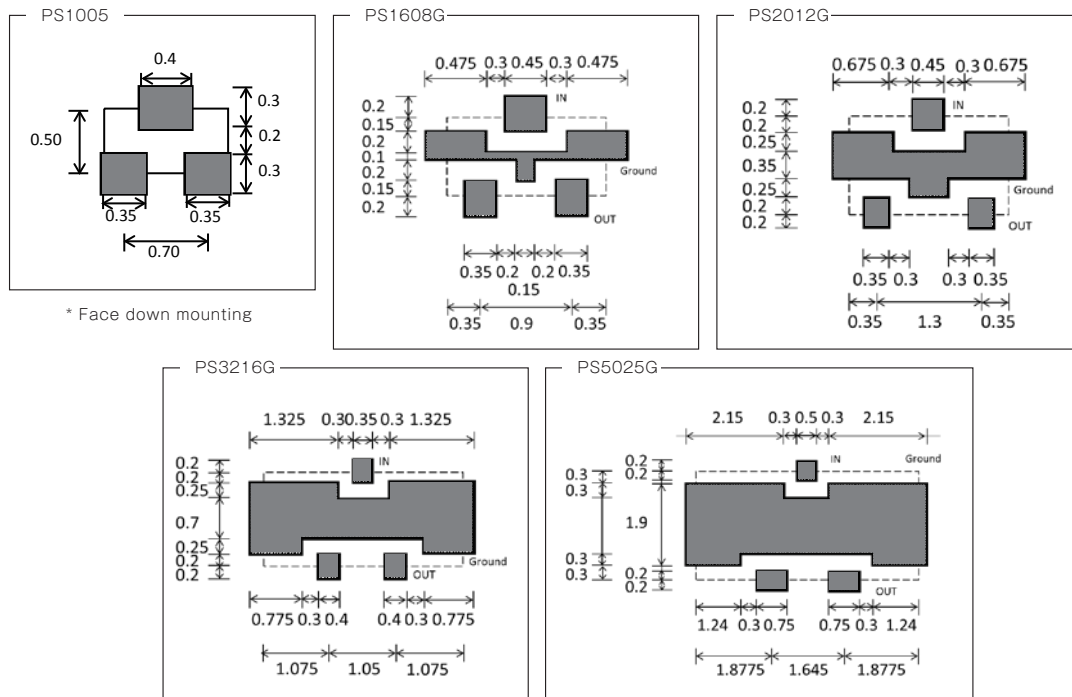


■ : Non-Plated area min (0.1)²

Type	Size (inch)	W	L	L1	t	a	b	c	d	e	f	g	h	h2
PS1005	0402	1.00±0.10	0.50±0.10	0.40±0.10	0.30±0.10	0.40±0.10	0.35±0.10	0.30±0.10	—	—	—	0.20±0.10	—	—
PS1608G	0603	1.60±0.10	0.80±0.10	—	0.40±0.10	0.45±0.10	0.35±0.10	0.35±0.10	0.80±0.10	0.40±0.10	0.80±0.10	0.25±0.15	0.10±0.05	(0.15)
PS2012G	0805	2.00±0.10	1.25±0.10	—	0.40±0.10	0.45±0.15	0.35±0.15	0.35±0.15	1.30±0.20	0.35±0.10	1.00±0.10	0.25±0.15	0.10±0.05	(0.15)
PS3216G	1206	3.20±0.10	1.60±0.10	—	0.40±0.10	0.35±0.10	0.40±0.15	0.45±0.15	1.05±0.20	1.075±0.10	1.60±0.20	0.25±0.15	0.20±0.05	(0.15)
PS5025G	2010	5.00±0.10	2.50±0.10	—	0.80±0.20	0.50±0.20	0.75±0.20	0.85±0.20	1.70±0.40	1.65±0.20	2.50±0.20	0.30±0.15	0.25±0.15	(0.15)

(unit : mm)

### ◆ Recommended land patterns (soldering footprints)



\* Face down mounting

### ◆ Derating Curve

